

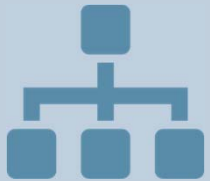
CARES Act

Coronavirus Relief Fund

Lee County
Allocation Planning

AGENDA:

COVID-19 Resources for Relief Funding



OVERVIEW



LOCAL
GOVERNMENT



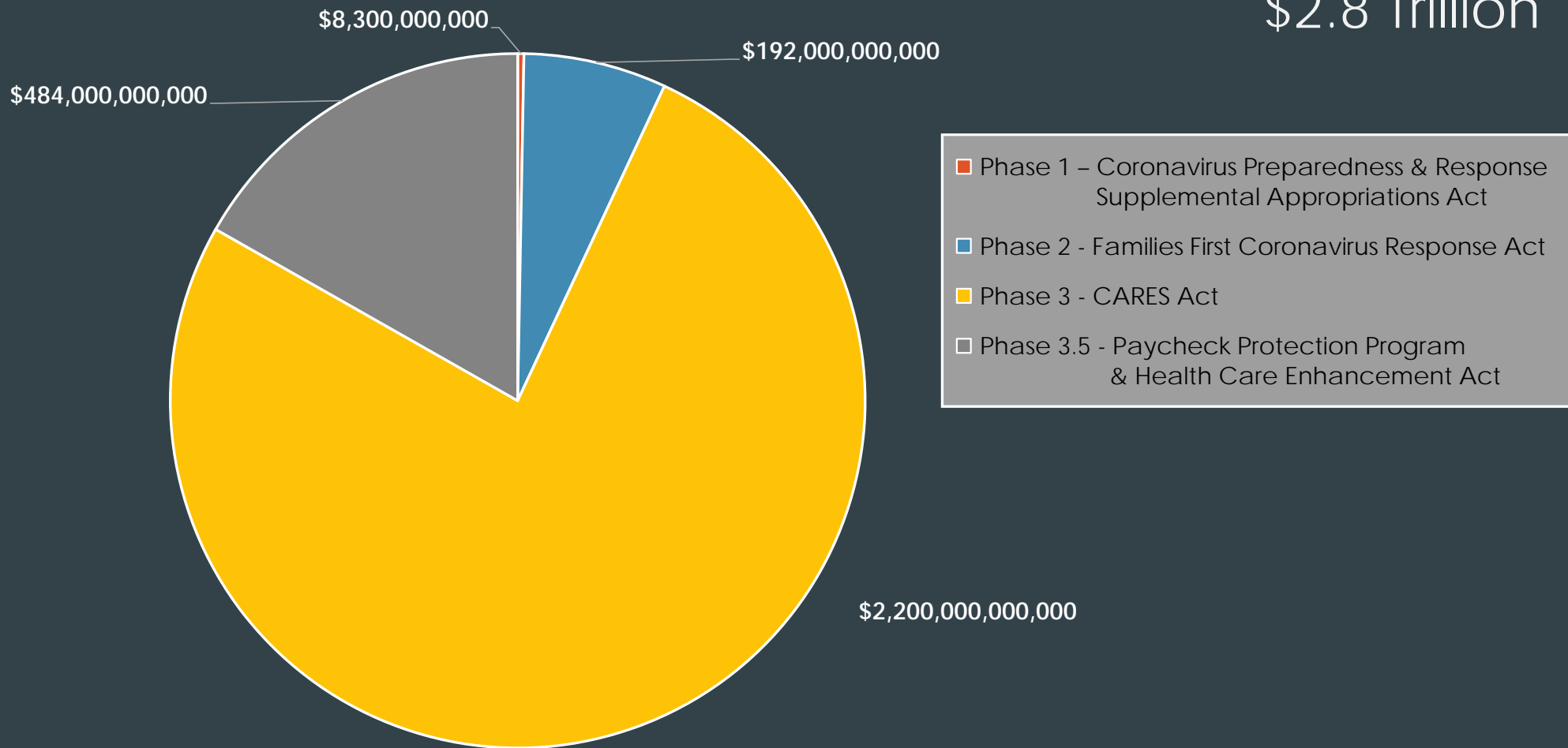
INDIVIDUALS



BUSINESS

Coronavirus Legislation to Date

\$2.8 Trillion



Phase 3 (H.R. 748, March 27) **CARES Act**



\$2.2 trillion aid package provides financial aid to families, governments and businesses impacted by the COVID-19 public health crisis:

- \$290 billion - Direct payments to eligible taxpayers
- \$260 billion - Expanded unemployment insurance
- **\$150 billion - State & local governments**
- \$510 billion - Expanded liquidity lending for businesses/local government
- \$377 billion - New loans & grants for small businesses
- \$127 billion - Hospitals for ventilators and other equipment



Florida Funding **CARES Act**

\$8.328 Billion for the State of Florida:

- \$4.6 Billion – Reserved to State
- \$3.7 Billion – Reserved for Local Governments
 - \$2.478 Billion – For Florida's 12 Direct Allocation Counties
(population > 500,000)
 - Remaining jurisdictions sub-grantees of State



CARES Act Direct Allocation: Lee County



LOCAL GOVERNMENT	ALLOCATION TO DATE	DETAILS
Lee County BoCC	\$134,459,744	Topic of discussion today
LeeTran	\$19,156,442	COVID-19 related operating costs, lost revenue, marketing, new safety measures barriers for drivers, farebox improvements (touchless)
Human Services	\$2,823,529	Local response related to COVID-19
Public Safety	\$710,922	Local response & care of patients with COVID-19
Lee County Port Authority	\$36,760,212	Eligible operational costs (payroll, utility bills or payment debt service) related to COVID-19
Lee County Sheriff's Office	\$325,489	Purchase & reimbursement for personal protection equipment (PPE) & cleaning/disinfecting supplies related to COVID-19 to protect first responders
Total to Date:	\$194,236,338	

CARES Act Fund



Eligible expenditures must be:

- Necessary & incurred due to COVID-19 public health emergency
- Not accounted for in budget most recently approved as of enactment date [3/27/20]
- Incurred during the period beginning 3/1/20 & ending 12/30/20



Inspector General of the U.S. Department of Treasury oversight



Funds not used by December 30, 2020 must be returned Treasury



Funds may NOT be used to fill shortfalls in government revenue

Eligible Expenditures

Medical Expenses

- Emergency medical response expenses

Public Health Expenses

- Communication & enforcement; medical & protective supplies; disinfection

Payroll Expenses for Public Safety and Public Health Services

- Employees whose job duties have changed to COVID-19 response

Actions to Facilitate Compliance with Public Health Measures

- Sanitation measures; food stability; unforeseen teleworking costs

Provision of Economic Support

- Small business support programs; mortgage, rent and utility programs

What's Next for Local Government Relief?

Additional Direct Allocations

Democrats & some Republicans calling for smaller jurisdictions to be included in Phase 3 and/or 4

Revenue Decline

H.R. 6652 would allow state & local governments to use funds to offset lost revenues

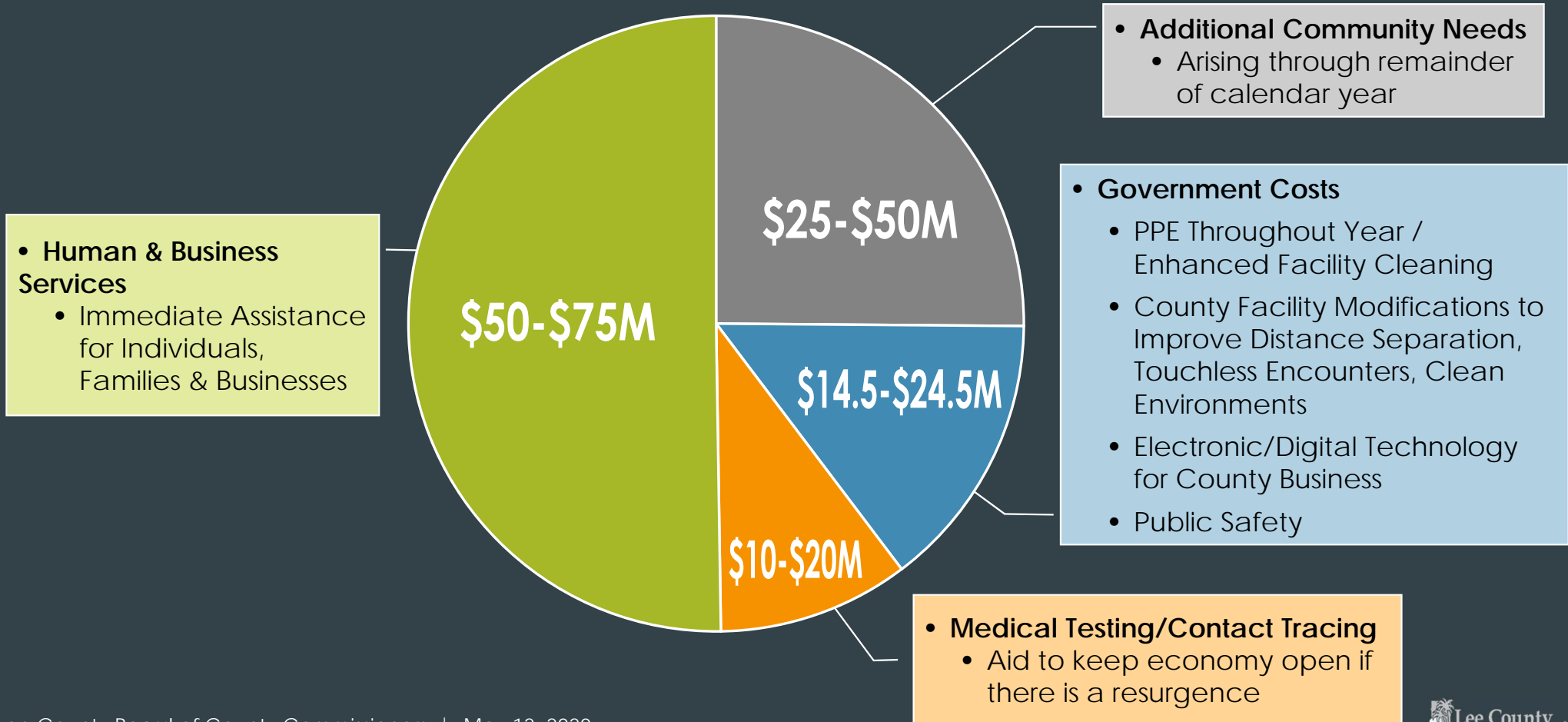
General Fund Flexibility

National Association of Counties & others lobbying for flexibility to use CARES Act funding as local jurisdictions deem necessary

Additional Treasury Guidance

State & local governments have joined Members of Congress in calling for additional clarity on rules

What Lee County Might Need to Fund? (Direct & Indirect Expenses)



Local Coronavirus Relief

INDIVIDUAL ASSISTANCE

Relief Available for Individuals

Federal Coronavirus Stimulus Check

- \$1,200 per adult, \$500 per dependent
- *Income limitations apply*

Federal Enhanced Re-employment

- Provides additional \$600 weekly benefit for individuals eligible for state Reemployment Assistance benefits



Human Service Allocation Planning

Additional Federal Funding of \$2.8M

Homelessness Prevention

- Assistance with past due rent/mortgage/utilities to prevent eviction/foreclosure
- Approx. 500 households

Homelessness Re-Housing

- Assistance for persons experiencing homelessness
- Approx. 40 household

Housing Search / Placement

- Services through a contracted agency
- Approx. 130 placements

Housing / Legal Services

- Low-income households experiencing evictions/ foreclosures/other legal issues due to Covid-19

Behavioral Health

- Telehealth & outpatient behavioral health services to support increased need resulting from Covid-19

Food Security/ Childcare / DV Services

- Support increased service demand for vulnerable populations due to Covid-19

Transportation Disadvantaged

- Support increased service demand for populations without access to transportation due to Covid-19
- Approx. 50,000 trips

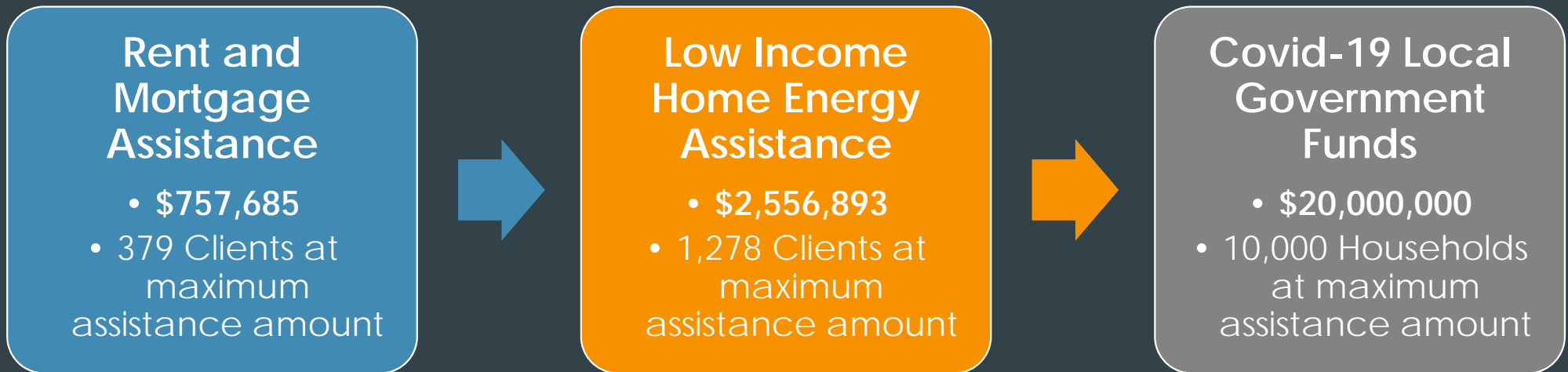
Economic Development / Job Retention

- Job retention program for anticipated job loss caused by Covid-19

Administration

- Funds for HVS grant administration & equipment to automate service delivery

Overall Program Funding: COVID-19 Rent, Mortgage & Utilities Proposal



- **Proposed Eligibility** – Households currently making less than \$55,000 per year
- **ALICE (Asset Limited, Income Constrained, Employed)** – \$52,140 for a family of four
- **\$2,000 Maximum Benefit**

Local Coronavirus Relief

BUSINESS ASSISTANCE

- PPE Supply
- Business Relaunch
- Childcare Support



Phases 3 (H.R. 748, March 27) and 3.5 (H.R. 266, April 24)
CARES Act and Paycheck Protection Program



\$746 billion to Small Businesses

- \$659 billion in Paycheck Protection Program
 - SBA will forgive loans of up to \$10 million if employees are kept on payroll and the money is used for payroll, rent, mortgage interest, or utilities
- \$87 billion Small businesses loans and grants
 - Economic Injury Disaster Loan provides loans of up to \$2 million
- \$30.2 billion loaned in FL; ~\$100 billion remaining in program

Personal Protection Equipment Program

Lee County Grant Program

- Procurement sources commodities
- County pays for equipment
- Distribute to targeted, high contact business sectors trying to reopen

Marketplace Matchmaking

- Provide support to local producers
- Connect buyers and sellers



Biz Relaunch Program



\$5,000 Grant for Safer at Home Business Sectors

- Closed or operations severely curtailed by Governor's Order
- 25 or fewer employees
- Eligible operating expenses not covered by other aid packages could include inventory, re-opening sanitation and safety supplies and signage, insurance premiums, etc., etc.
- Web portal and call-center; streamlined application

Childcare Support Program

Providers

- PPE (Personal Protective Equipment)
- Disinfecting supplies and services
- Customers

Parents

- Vouchers to offset cost of summer camp/daycare/educational services

Partners

- United Way, Early Learning Coalition, School District, etc.



Lee County COVID-19 Recovery Proposals

PROGRAM	ALLOCATION
Rent, Mortgage & Utilities Assistance	\$20,000,000
PPE	\$1,500,000
Business Relaunch	\$25,000,000
Childcare Support	\$3,500,000
Proposed Phase 1 Total:	\$50,000,000