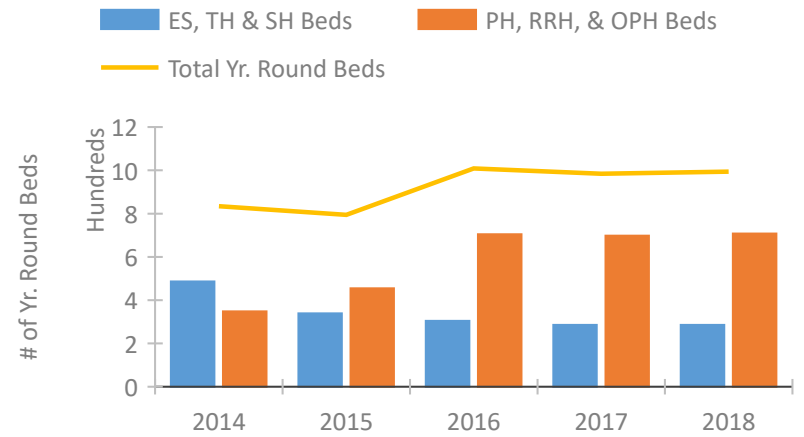


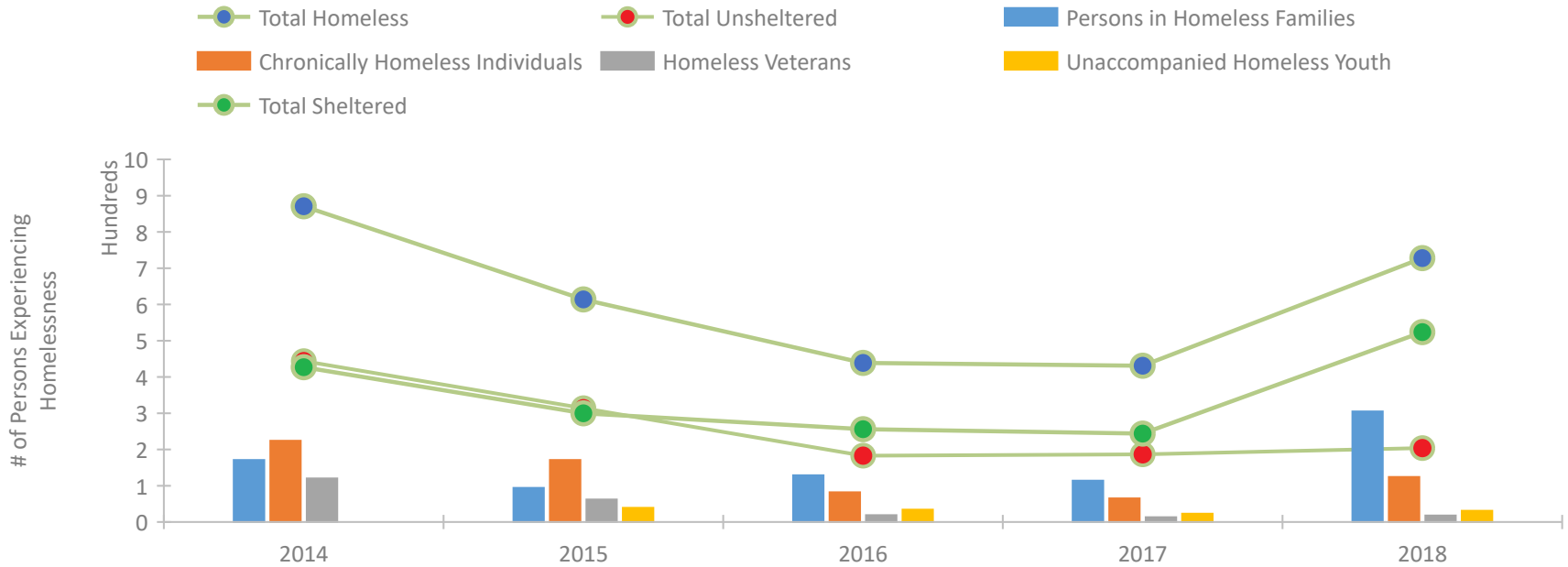
CoC Performance Profile FL-603 Ft Myers, Cape Coral/Lee County CoC



Housing Inventory Count by Program Type

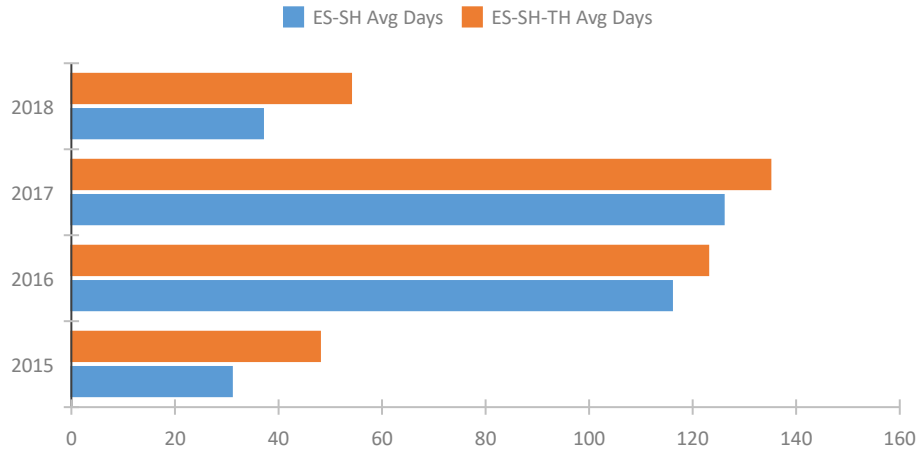


Homeless Population – Point-in-Time (PIT) Count

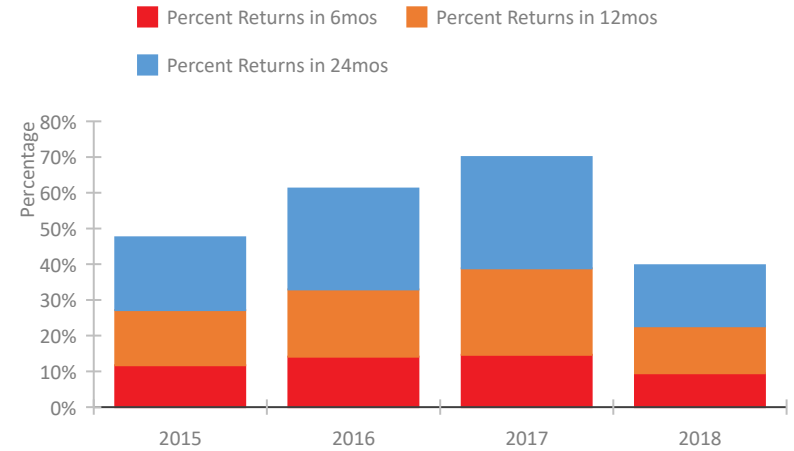


CoC Performance Profile FL-603 Ft Myers, Cape Coral/Lee County CoC

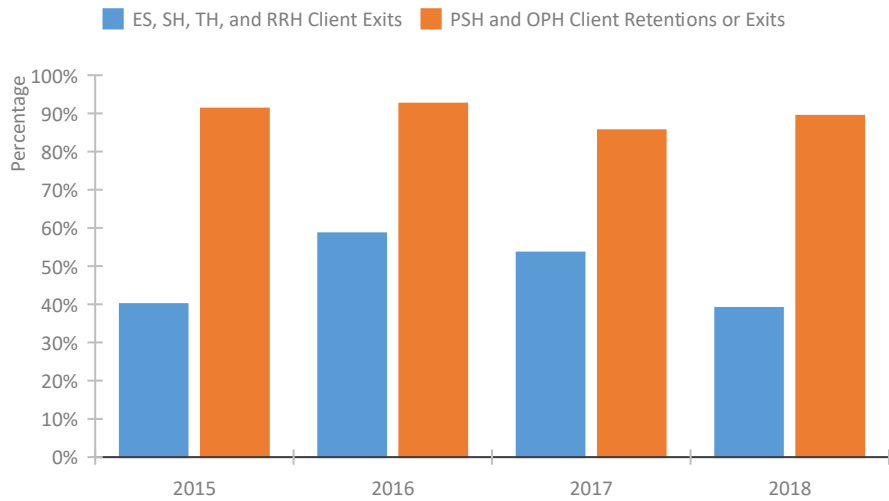
Length of Time Homeless



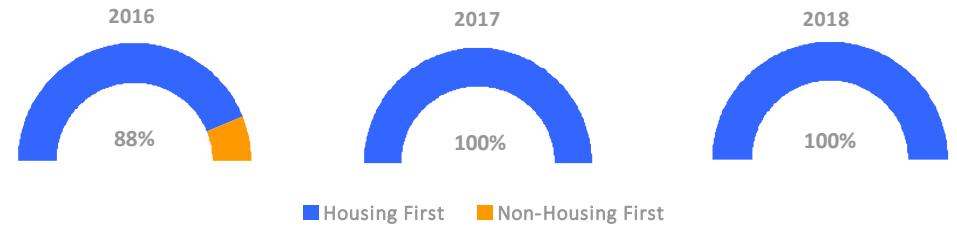
Returns to Homelessness Over Time



Exits to Permanent Housing by Program Type



Proportion of Housing First Projects by Year



Number of Projects by Year

	2016	2017	2018
Housing First Projects	7	8	8
Non-Housing First Projects	1	0	0

Data Summary: FL-603 Ft Myers, Cape Coral/Lee County CoC

Point-In-Time Count Summary

	2014	2015	2016	2017	2018	2017-18 Change	% Change
Number of Sheltered Persons in Families	98	64	94	102	274	172	169%
Number of Unsheltered Persons in Families	73	30	35	12	31	19	158%
Number of Sheltered Individuals	329	236	162	142	250	108	76%
Number of Unsheltered Individuals	371	284	148	175	173	-2	-1%
Total Homeless Persons	871	614	439	431	728	297	69%
Number of Sheltered Families	26	22	30	32	73	41	128%
Number of Unsheltered Families	14	9	7	3	7	4	133%
Number of Total Families	40	31	37	35	80	45	129%
Sheltered Chronically Homeless Individuals	21	37	20	21	32	11	52%
Unsheltered Chronically Homeless Individuals	203	134	62	44	92	48	109%
Total Chronically Homeless Individuals	224	171	82	65	124	59	91%
Sheltered Veterans	59	34	12	4	7	3	75%
Unsheltered Veterans	61	28	7	9	11	2	22%
Total Veterans	120	62	19	13	18	5	38%
Sheltered Unaccompanied Youth (up to 24)	--	22	24	18	22	4	22%
Unsheltered Unaccompanied Youth (up to 24)	--	17	10	5	9	4	80%
Total Unaccompanied Youth (up to 24)	--	39	34	23	31	8	35%

System Performance Measures Summary

	2014	2015	2016	2017	2018	2017-18 Change	% Change
Length of Time Homeless	N/A	48	123	135	54	-81	-60%
Returns to Homelessness in 6 Months	N/A	11.7%	14.1%	14.7%	9.5%	-5.2%	N/A
First Time Homeless	N/A	910	1324	1012	1345	333	32.9%
Exits to Permanent Housing (ES, SH, TH, RHH)	N/A	40.0%	58.6%	53.6%	39.0%	-14.5%	N/A
Retention of or Exits to Permanent Housing (PSH, OPH)	N/A	91.3%	92.5%	85.6%	89.3%	3.8%	N/A

Housing Inventory Count Summary

	2014	2015	2016	2017	2018	2017-18 Change	% Change
Emergency Shelter	283	254	249	231	231	0	0%
Transitional Housing	203	85	55	55	55	0	0%
Permanent Supportive Housing	323	401	431	387	466	79	20%
Rapid Re-Housing	25	54	274	311	242	-69	-22%

Award Summary

	2014	2015	2016	2017	2018	2017-18 Change	% Change
CoC	\$2,061,821	\$1,762,276	\$1,661,056	\$1,739,532	\$1,835,581	\$96,049	6%
ESG	\$197,693	\$222,776	\$228,418	\$605,383	\$238,555	(\$366,828)	-61%